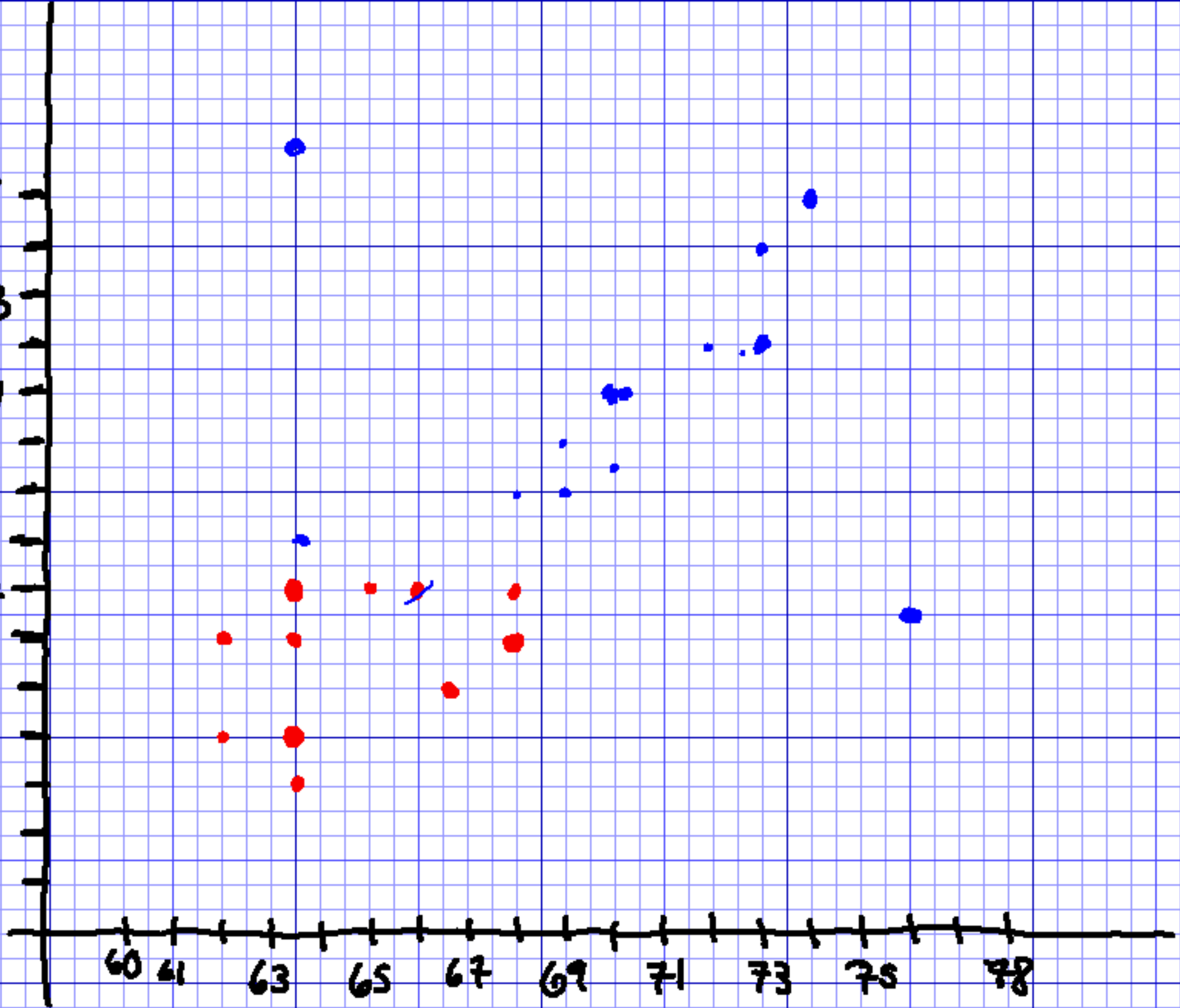


VISION (mm)

15  
13  
11  
9  
7  
5  
3  
1

60 61 63 65 67 69 71 73 75 78

HEIGHT



- 2 quantitative variables
- categorical  $\Rightarrow$  diff. colors  
shapes
- Individuals = point  
└ duplicates - doesn't show
- Expl - x-variable  
change in y-var.
- Resp. - y-var.

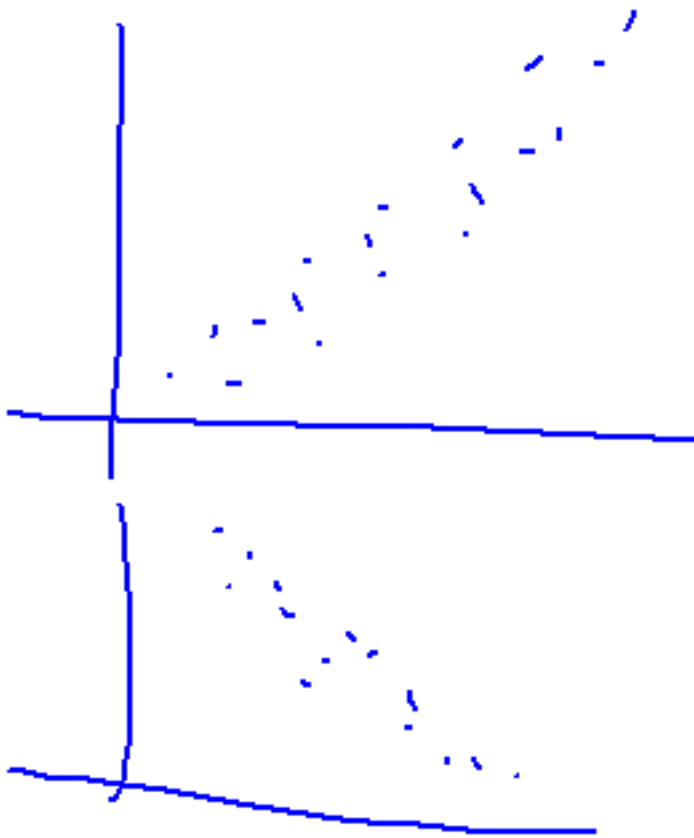
① Hrs study - expl.  
Grade - resp.

② grams toxin - expl.  
# tumors - resp.

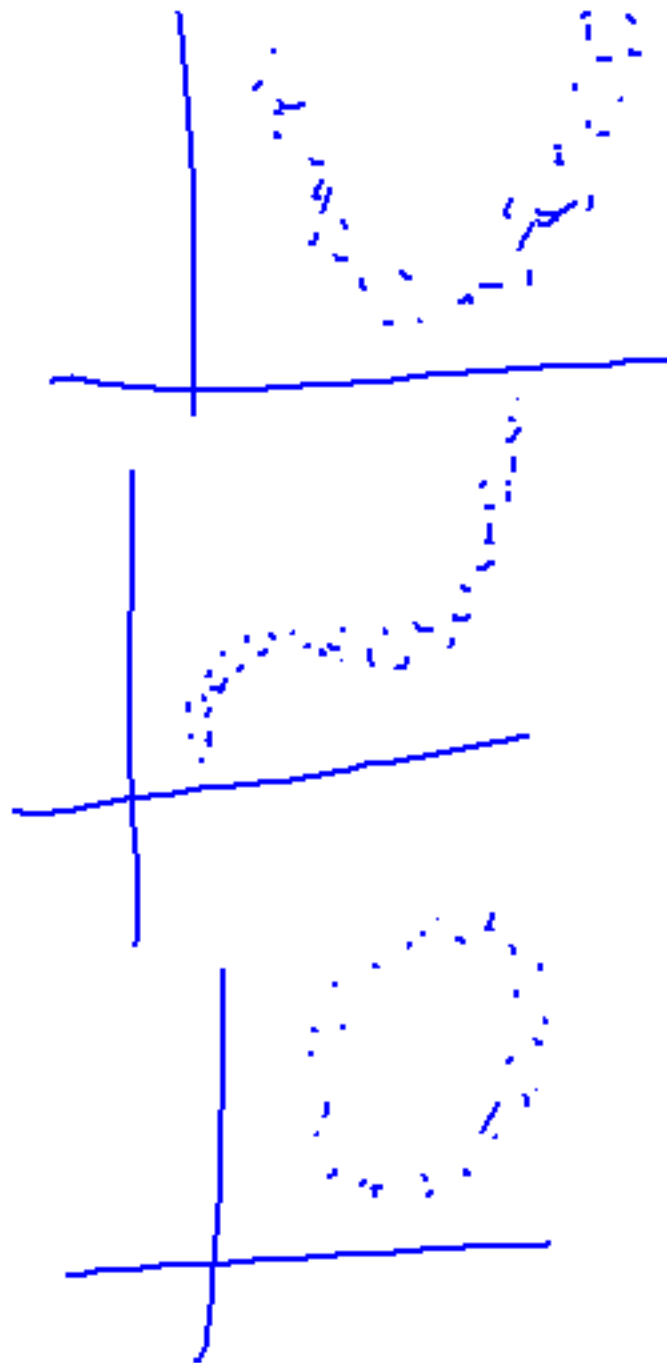
③ <sup>average</sup> \$ - expl.  
life - resp.

Form

linear



Curved:

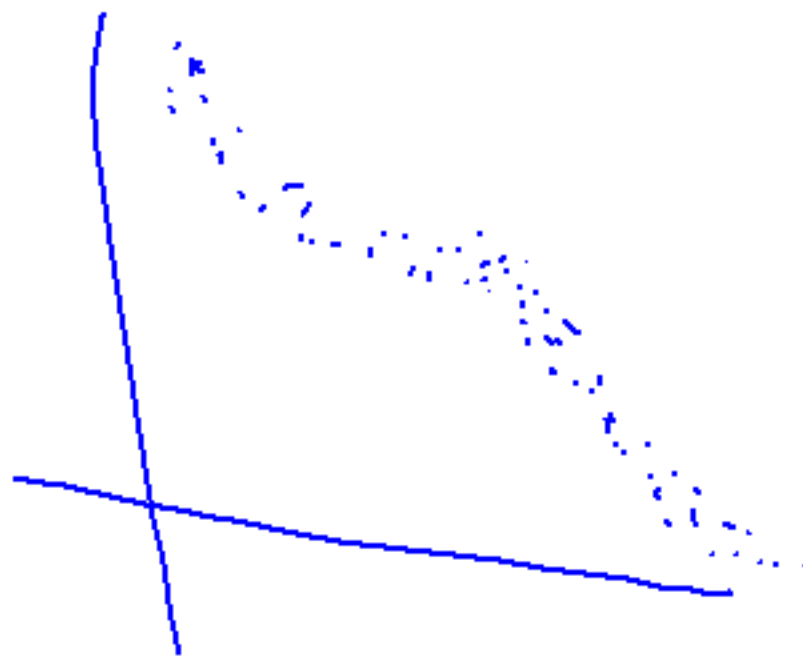
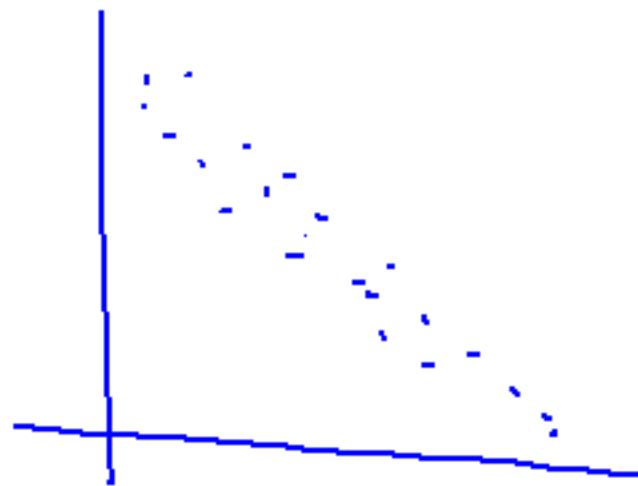


Scattered:

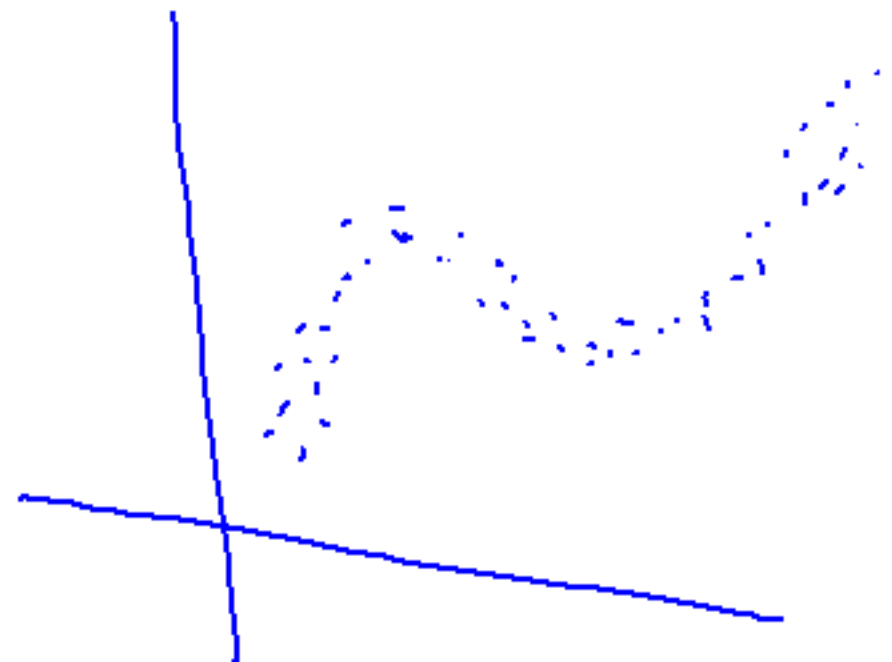


Direction:

Negative



Positive



Scattered-nonp

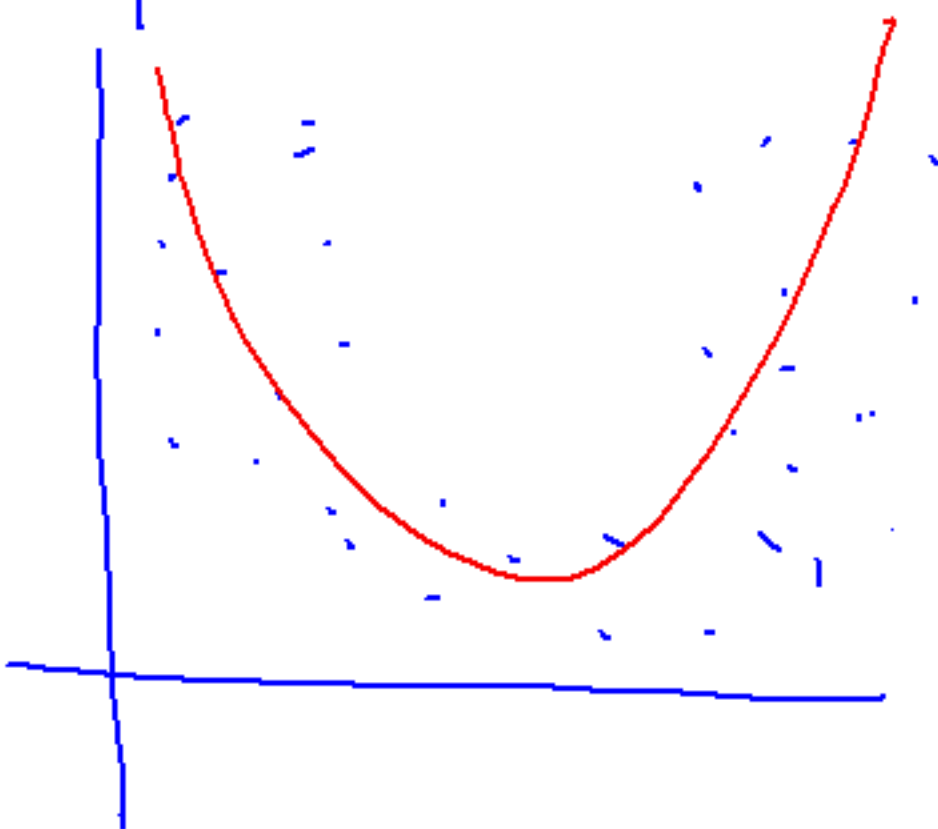
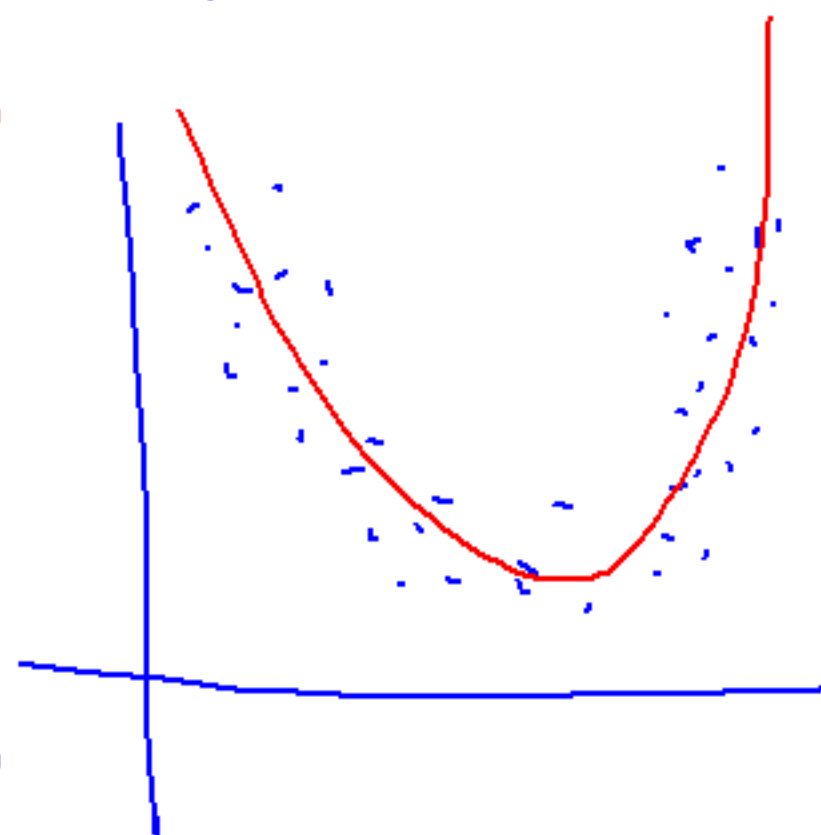
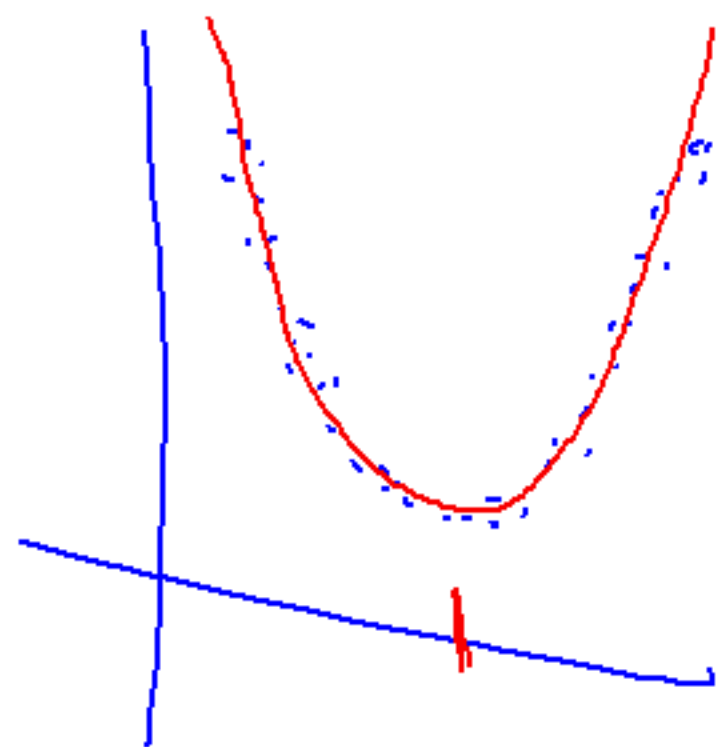
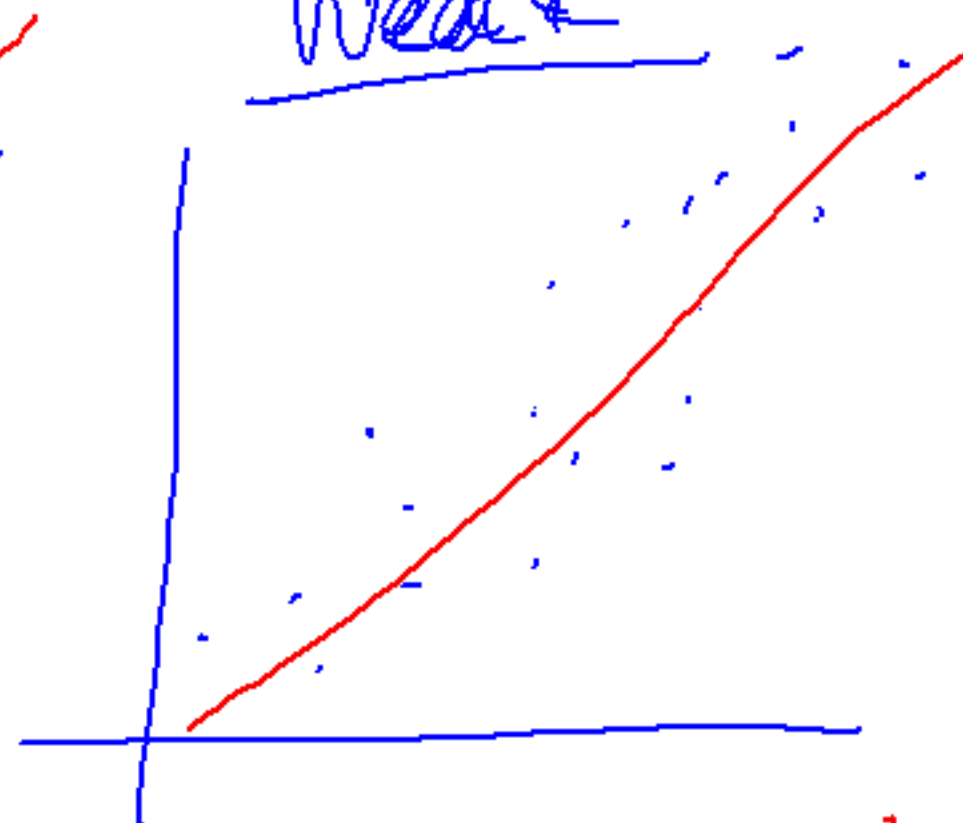
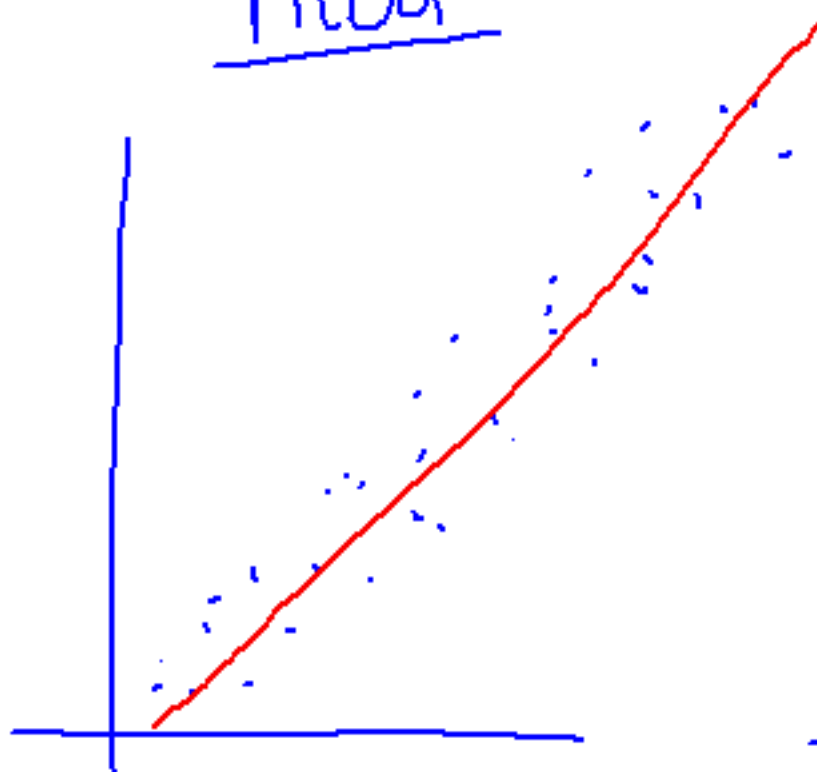
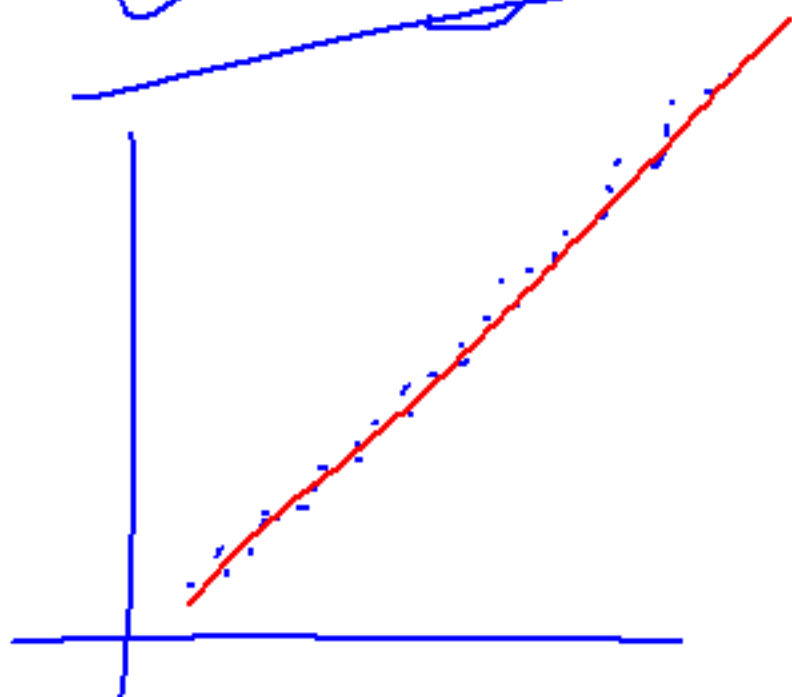
## Strength

- how well the points follow/hug a form (linear or curved)
- WORDS
  - Weak — moderately weak
  - moderate
  - Strong — moderately strong
  - Scattered — very weak - none

Strong

Mod

Weak



① - curved  
- positive  
- strong

② - linear  
- negative  
- strong

③ - linear  
- positive  
- moderately strong  
- outlier @ ( , )



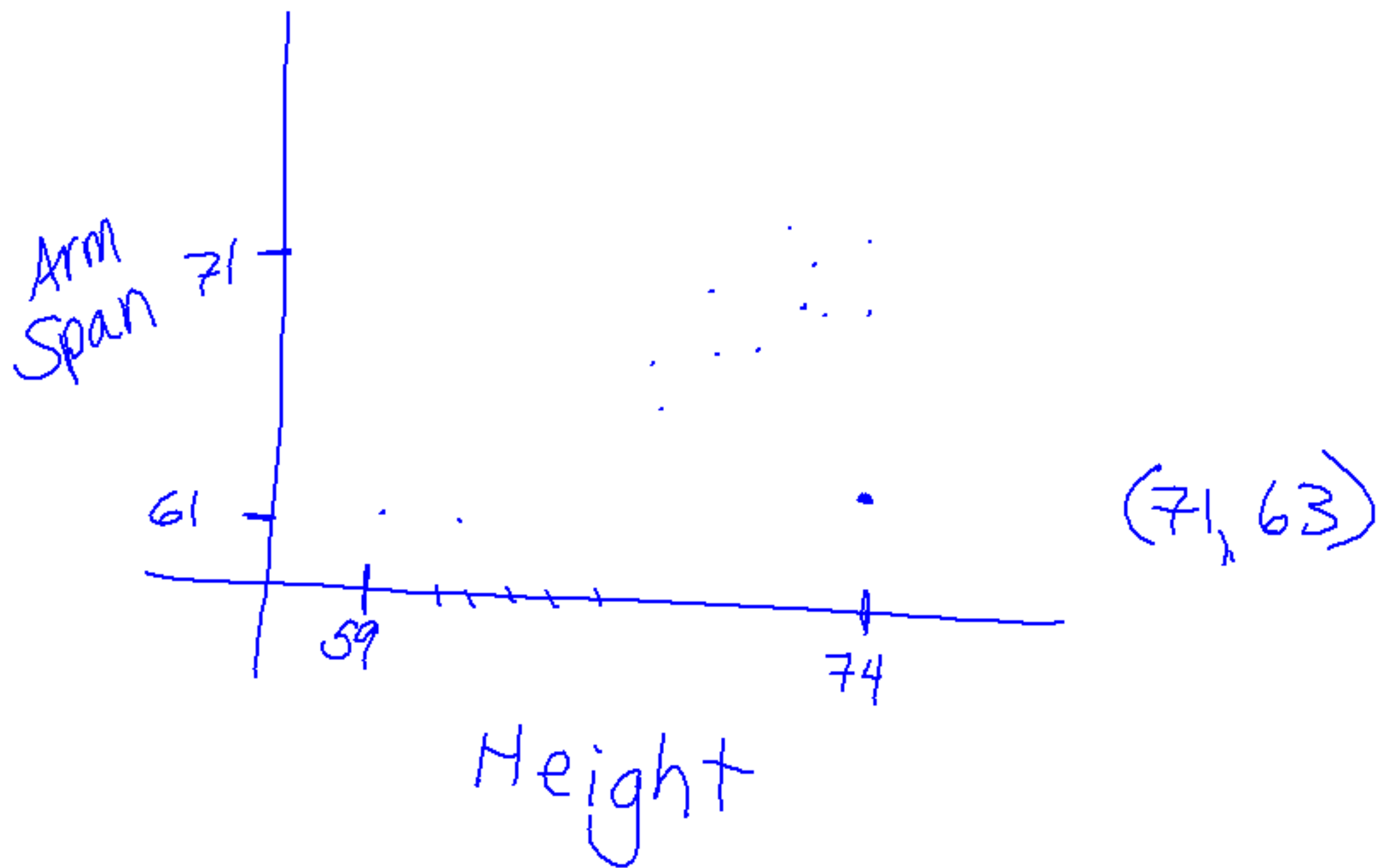
- ① - curved/parabolic  
- negative until  $x = \text{---}$   
then positive  
- strong

- ② - linear/curved  
- neg.  
- mod. / mod. strong

- ③ - linear  
- positive  
- mod.



- ④ - 2 clusters  
- negative  
- weak  
- outlier @ ( , )



p. 337 #1,4

p. 344 #6,8